

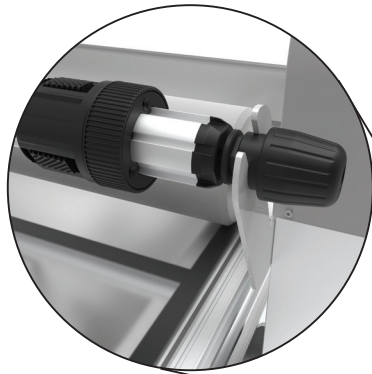


**Lamination
system**



totalimage
SUPPLIES

**Sign Master
Workstations**



Whether your pre-masking cut letters, mounting prints onto boards or laminating the Lamination Systems range of flatbed applicators will help you do the job without wrinkles or bubbles resulting in a smooth professional finish everytime. What's more it can be operated using only one person so even oversized prints can be finished with ease making your production much more efficient.



CONTACT US:

Total Image Supplies
164 Christmas Street
Fairfield, VIC 3078

1300 768 015
info@totalimagesupplies.com.au

Specifications

	1300	1500	1700
Max lamination size	1300/2500mm	1500/3000mm	1700/3700mm
Max lamination thickness	100mm	100mm	100mm
Operation type	Manual	Manual	Manual
Max temperature	room-60°C	room-60°C	room-60°C
Roller control	Pneumatic	Pneumatic	Pneumatic
Heating -	Infrared	Infrared	Infrared
Preheating time -	10 - 15 min	10 - 15 min	10 - 15 min
Power input / supply	240v (0.8-1000w)	240v (0.8-1000w)	240v (0.8-1000w)
Net Weight -	820 kgs	940 kgs	1150 kgs