

MUTOH

XpertJet C641SR Pro

Bring Professional Print & Cut To Your Benchttop



Better - Faster - Easier



Vibrant Colors & Rich Smooth Tones: Eye-catching, vibrant colours that make your designs pop, whether it's bold graphics or tonal images.

Exceptional Fine Detail: From intricate patterns to tiny text, achieve crisp, sharp results for flawless prints at any scale.

Long-Lasting Durability: Mutoh MS31 ink offers superior resistance and durability - perfect for both indoor and outdoor applications.

Best in Class ROI: High-speed output to print more in less time, allowing you to fulfill larger orders or meet tight deadlines. Print smarter, not slower.

Effortless Print & Cut: Create professional-grade stickers with ease and accuracy in one seamless process.

Cut Coloured Vinyl & Specialty Films: Expand your design possibilities by cutting through coloured vinyl, and specialty films, perfect for everything from signage to unique projects.

Two Cutting Functions for Maximum Flexibility:

- *Contour Cut:* Cut through the surface layer of self-adhesive vinyl, leaving the backing intact.
- *Through Cut:* Cut all the way through the surface and carrier layer, creating removable sections or perforated designs.



Apparel



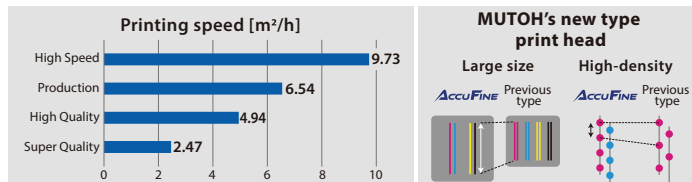
Stickers



Signage

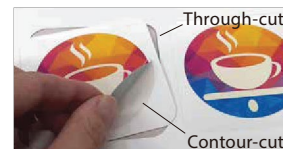
Print speed

Equipped with MUTOH's new type print head AccuFine: a large and high-density print head with improved ink landing accuracy, high-speed printing, and high image quality. The print speed is up to 2.3 times faster than our previous models, which makes it extremely productive.



Cutting types

Supports both "contour-cut" and "through-cut" cutting types. The former cuts through the media leaving the release liner layer intact, while the latter one cuts all the way through the release liner while leaving connecting seams.



Included RIP software

Convert data from different graphic applications into a format that can be printed and sent as print/cut data.

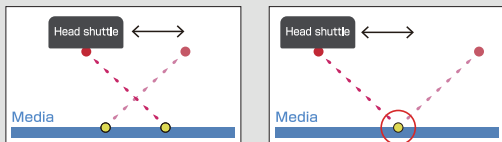


MUTOH's unique technologies for automation and efficiency

Automatic Bi-D adjustment

DropMaster 2

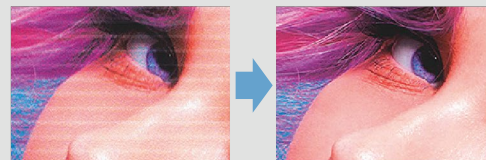
A built-in sensor on the carriage automatically calibrates bi-directional alignments saving time and delivering sharp prints.



Automatic media feed adjustment

FEED MASTER

By printing a print pattern and reading it with a sensor, paper feed correction is performed automatically.



Nozzle Selection function

Nozzle Area Select

Nozzle area select temporarily prints using selected areas of active nozzles when clogged nozzles fail to recover. It is a reliable function that ensures seamless operations.



Media roll balance management

Media Tracker

Media Tracker tracks the remaining media by printing a barcode before removing the roll. Scan the barcode to manage the remaining media.



MUTOH genuine ink

MS31

Exclusive to MUTOH's eco-solvent printers, MS31 has a wide colour gamut, high-quality printing capabilities, as well as excellent weather, abrasion, and chemical resistance. It doesn't easily clog the nozzles and is low-maintenance. Moreover, MS31 is "GREENGUARD Gold" certified, which proves that this ink does not release harmful levels of chemicals into its surrounding areas.



Specifications

| | | |
|-------------------------|---------------------------|--|
| Print head | Print method | On-demand piezo drive system |
| | Head height | Low: 1.5mm, High 2.8mm |
| Media | Maximum roll media width | Maximum 630mm |
| | Maximum thickness (Print) | Low: 0.3mm, High: 0.8mm |
| | Maximum thickness (Cut) | 0.4mm with liner and 0.22mm without liner |
| | Size | Φ150 mm or less / 2" or 3" core / 9kg or less |
| Maximum printable width | | 600mm |
| Ink | Type | VJ-MS31 eco-solvent |
| | Colour | 4-Color (Black, Cyan, Magenta, Yellow) |
| | Capacity | 220ml cartridge / 1000ml ink bag ^{*1} |

*1 Dedicated adaptors are required for ink bags

| | |
|-------------------------------------|--|
| Cutting speed / force | 20~15mm/s / 30~300gf |
| Print resolution | Maximum 1200dpi |
| Interface | Ethernet (10BASE-T / 1000BASE-TX) |
| Power supply | AC 100V~120V ±10% / AC 200V~240V ±10% 50/60Hz ±1Hz |
| Environmental condition | Temperature: 20°C~32°C Humidity: 40%~60% No condensing |
| Power consumption | Operation: 215W (800W peak), Sleep mode: 13W or less |
| External dimensions (W) x (D) x (H) | 1,190mm x 438mm 366mm (body) |
| | 1,190mm x 590mm x 1,166mm (including stand) |
| Weight | Printer: 34kg Stand: 10.2kg |
| RIP software | VerteLith (MUTOH genuine RIP software) |

MUTOH

Mutoh Australia Pty Ltd
 Unit 19 / 76 Reserve Road, Artarmon NSW 2064
 ph: 02 9437 1366 e: sales@mutoh-au.com
 web: www.mutoh-au.com

Distributed by: