

# MUTOH

Creation, we make it happen ...



Media width  
Max.1371mm



CMYK

# *XpertJet* 1341SR Pro

Eco Solvent Inkjet Printer

## High productivity and print quality Remarkable cost performance

The MUTOH XpertJet series, which delivers excellent print quality and high productivity, now has a 54"/1.3m wide eco-solvent printer perfectly balancing cost and performance. In a compact body that's easy to handle, equipped with MUTOH's latest unique technologies. The XpertJet 1341SR Pro is paired with MUTOH's new eco-solvent ink "VJ-MS31" that excels in colour reproduction, weather resistance, and ease of maintenance. The ink has been certified UL GREENGUARD Gold, making it environmentally and also operator friendly.

The XpertJet 1341SR Pro brings the best "Made in Japan Quality" to various markets such as banners, trade show graphics, indoor and out door signs, POP displays, vehicle wrap and more.



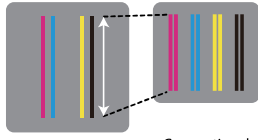
# MUTOH “Made in Japan Quality”

## The integration of three features enables high quality printing

### New print head “AccuFine”



“AccuFine” is a new extra wide and high density piezo print head. It achieves high productivity and high image quality thanks to extremely precise ink dot placement.

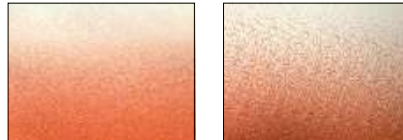


[ AccuFine ] [ Conventional head ]  
\*This is different from the actual ink arrangement

### New print effect “i-screen”



“i-screen” is created by evolving MUTOH’s “Intelligent Interweave” printing technology. By arranging the dots in a way that takes into account how they look, this reduces banding for smoother print images.



[ i-screen ] [ Conventional effect ]

MUTOH genuine RIP software



“VerteLith” optimizes the performance of the XpertJet 1341SR Pro, and delivers unmatched quality outputs and the efficiency of business workflow.

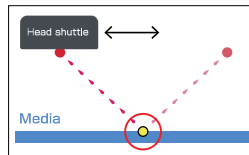


The MUTOH original halftone technology delivers better skin tones with smoother gradation and less variation in colour density

## MUTOH's unique technologies for automation and efficiency

### Automatic Bi-D adjustment “DropMaster 2”

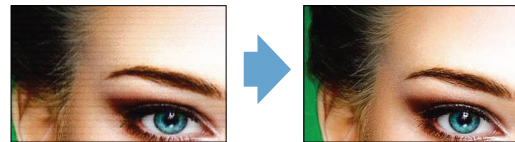
A built-in sensor on the carriage automatically calibrates bi-directional alignments, and saves time and reduces validation in adjustment among different operators.



### Automatic media feed adjustment “FEED MASTER”



By printing a print pattern and reading it with a sensor, paper feed correction is performed automatically.



[ Before feed correction ] [ After feed correction ]

### Nozzle selection function “Nozzle Area Select”



Nozzle area select temporarily prints using selected areas of active nozzles when clogged nozzles fail to recover. It is a reliable function that ensures seamless operations.

### Media roll balance management “Media Tracker”



Media tracker manages the remaining media by printing barcodes before removing a roll in use. It will read the barcode when reloading that roll. Streamlines management of remaining capacity for multiple media.

## Enhanced maintenance

A maintenance door is provided on the standby side of the print head, which makes it easy for daily maintenance. It also has a replaceable cleaning wiper.



Maintenance door



Cleaning wiper

## High media compatibility

Equipped with a mechanism that enables media transport in optimal conditions. Included with 20kg take-up unit and media holder for a smoother media handling capability.



Partial pressure cancel mechanism



Three head height settings



Optional 30kg take-up unit (20kg take-up unit as standard)



Media holder for feed

## Specifications

Print head	Print method	On-demand piezo drive system
	Head height	Low : 1.5mm, Mid : 2.0mm, High : 2.5mm
Media	Maximum roll media width	Maximum : 1371mm
	Maximum media thickness	Low : 0.3mm, Mid : 0.8mm, High : 1.3mm
	Size	Φ150 mm or less / 2 inches or 3 inches / 20 kg or less
Maximum printable width		1361mm
Ink	Type	VJ-MS31
	Colour	4-Color ( Black, Cyan, Magenta, Yellow)
	Amount	220ml / 1000ml

Print resolution		Maximum 1200dpi
Interface		Ethernet (10BASE-T / 1000BASE-TX)
Power supply		AC 100V~120V ±10% / AC 200V~240V ±10% 50/60Hz ±1Hz
Environmental condition		Temperature : 20°C~32°C Humidity : 40%~60% No condensing
Power consumption	Operation	AC100V~120V : 1230W or less / AC200V~240V : 1560W or less
	Sleep Mode	AC100V~120V / AC200V~240V : 21W or less
External dimensions (W) x (D) x (H)		Printer mounted on stand : 1916mm x 685mm x 1218mm
Weight		86.0kg (printer : 66.0kg, Stand : 20.0kg)
RIP software		VerteLith (MUTOH genuine RIP software)

# MUTOH

Mutoh Australia Pty Ltd  
Unit 19 / 76 Reserve Road, Artarmon NSW 2064  
ph: 02 9437 1366 e: sales@mutoh-au.com  
web: www.mutoh-au.com

Distributed by: