

**Lamination
system**



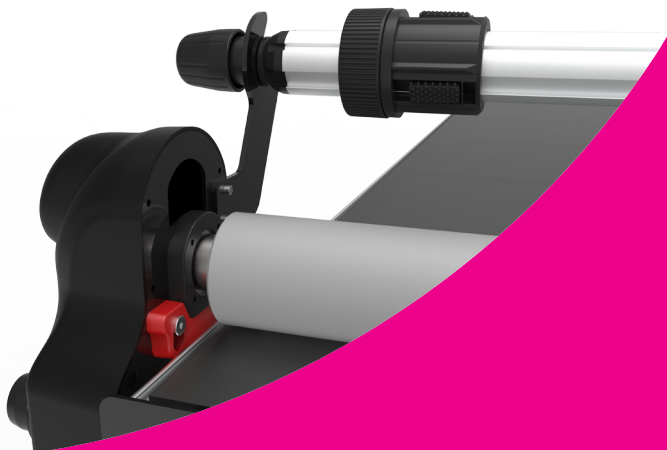
totalimage
SUPPLIES



MINI
TABLE 918

NEW Workstation MINI.

The 918 will make light work of your laminating and mounting requirements. Mount prints / fabrics to boards, glass, metal etc with ease as no special staff are required to operate these simple to use robust machines. Achieve professional bubble free results every time with the Workstation MINI.



CONTACT US:

Total Image Supplies
164 Christmas Street
Fairfield, VIC 3078

1300 768 015
info@totalimagesupplies.com.au

Specifications

Max lamination size	918/1800
Max lamination thickness	50mm
Operation type	Manual
Roller upgrade	Air cylinder
Heating	N/A
Power input / supply	240v (0.8-1000w)
Net Weight	300 kgs