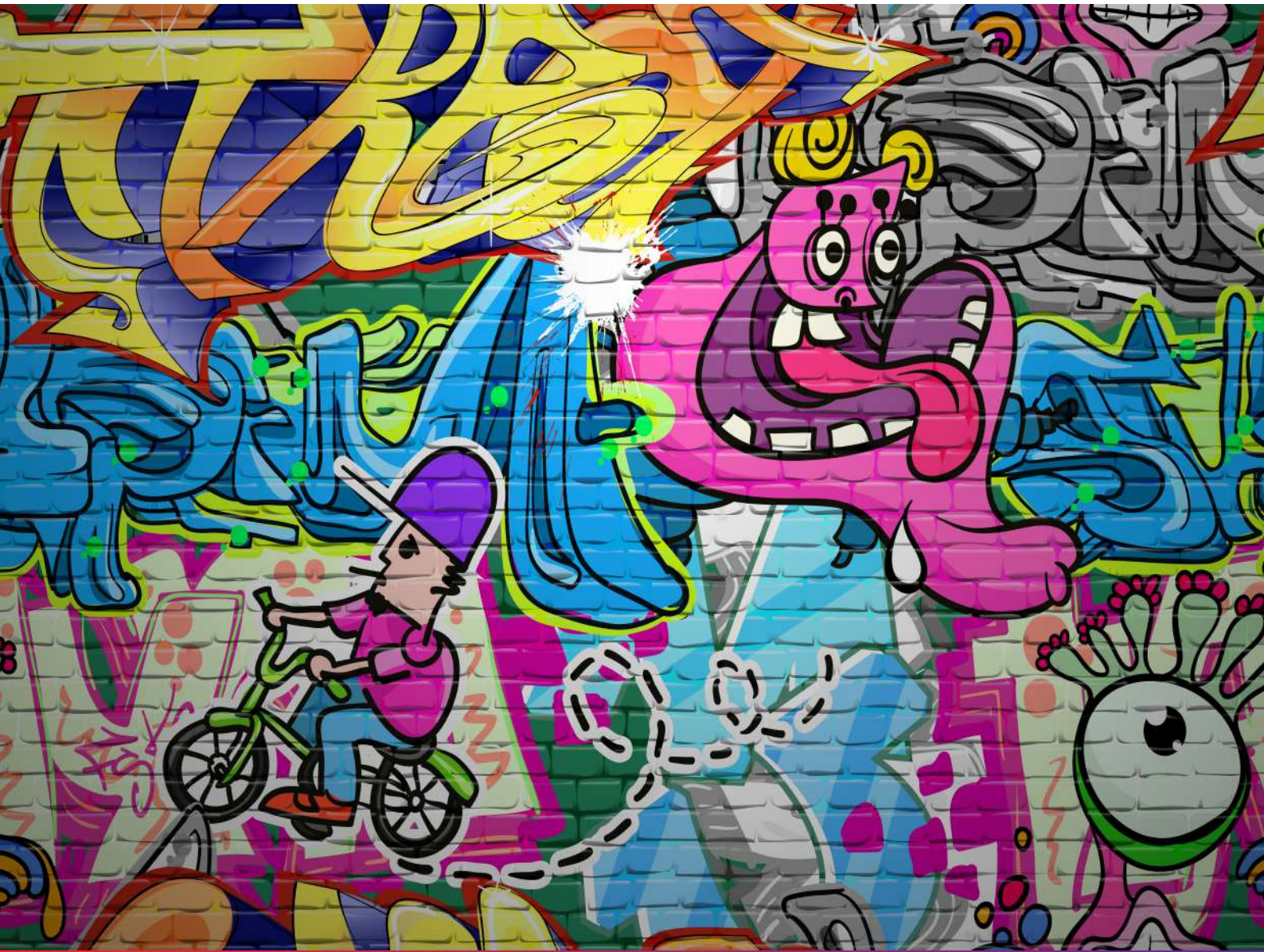




**totalimage**  
SUPPLIES



WALL ART PRINTS



## **ImageTex Fabric Textile Self-Adhesive Wallpaper**

**Removable • Blockout • Fire Rated**

**Compatible with Aqueous, Solvent, UV & Latex Inks**

# ImageTex Fabric Textile Self-Adhesive Wallpaper

Removable • Blockout • Fire Rated

100% Polyester Woven Fabric for Aqueous, Solvent, UV and Latex inks.  
Removable self-adhesive fabric, no residue on the surface when it is removed.  
Greyback opaque/blockout. Fire retardant product.

## APPLICATION

■ Wall Signage	■ Wallpaper	■ Fine Art
■ Wall Advertising	■ Wall Art and Murals	■ Decals and Stickers

## RECOMMENDED PRINTERS

Canon	Epson	Mutoh	Roland	Mimaki	HP Latex
★★★★★	★★★★★	★★★★★	★★★★★	★★★★★	★★★★★

## TECHNICAL DATA

<b>Base material</b>	100% Polyester Woven Fabric	<b>Compatible Ink</b>	Aqueous, Solvent, UV, Latex
<b>Denier</b>	150×150	<b>Ink limit</b>	250%
<b>Total weight(g/m<sup>2</sup>)</b>	345 (back liner paper 100gsm)	<b>Surface finish</b>	Matt
<b>Tolerance</b>	±5%	<b>Optimum printer temp.</b>	70°F (21 °C)
<b>Thickness(μm)</b>	332 (back liner paper 138μm)	<b>Relative humidity (RH)</b>	20~60%
<b>Tolerance</b>	±5%	<b>Indoor life expectancy</b>	Protected: Minimum 6 months
<b>Threads per Inch</b>	62 T		Unprotected: Minimum 3 months
<b>Color(CIE Measurement)</b>		<b>Water Proof</b>	Yes
<b>Tensile strength (Kg/mm<sup>2</sup>)</b>		<b>Fire Retardant</b>	AS/NZS 3837-1998

## ROLL SPECIFICATION

<b>Width</b>	<b>Gross Weight / roll (Kg/roll)</b>	<b>Roll length</b>	30 m
54" (1370mm)	16.44	<b>Diameter of Core</b>	3 inch
60" (1520mm)	18.11	<b>Thickness of Core</b>	4 mm